

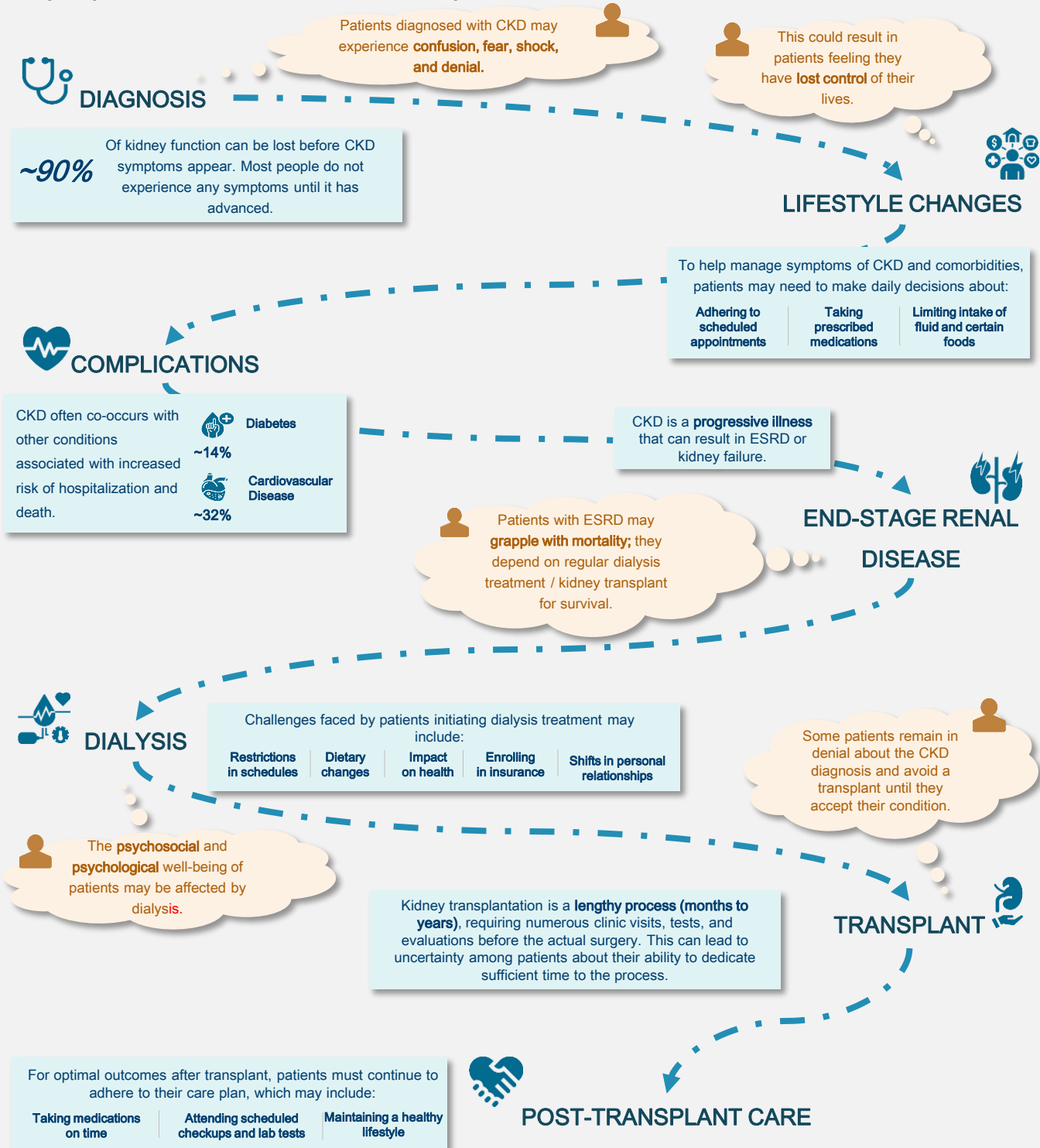
# Patient Journey in Chronic Kidney Disease

## Impact Of Disease On Patient Lives

Chronic kidney disease (CKD) affects over 10% of the global population (800+ Mn individuals) and is often undetected until the advanced stages, becoming a leading cause of death worldwide. While there is no cure, treatment can manage symptoms and slow progression. Progression of CKD to end-stage renal disease (ESRD) can result in the requirement for renal replacement therapy.

### PATIENT JOURNEY

CKD is a challenging and debilitating condition. As it progresses, patients experience a decline in their health-related quality of life, leading to higher healthcare resource utilization and escalating costs.



KEY BURDEN AREAS

*Patients diagnosed with CKD face many challenges as they move from initial CKD diagnosis to ESRD.*

Key Burden Areas	Description
Non-standard CKD Screening	Unconventional CKD screening methods can lead to unplanned initiation of dialysis, increasing the likelihood of medical complications and imposing physical, emotional, and financial burdens on patients, their families, and caregivers. However, with timely CKD management, these stressors are reduced, and mortality rates decline.
Fear and Denial	Clinicians face the challenging responsibility of preparing patients for dialysis, often dealing with individuals who are fearful or in denial of their CKD diagnosis.
Overwhelming New Reality	Entering dialysis means patients arrange their lives around their dialysis treatment. In addition to how dialysis affects their health, patients also have to deal with insurance enrollment, diet changes, relationship shifts, and new schedule restrictions.
Missing Support	Education and support from the facility are key for a smooth transition into dialysis. They are not always possible because staff must split time between patient care and documenting for regulatory compliance and quality measures.
Coordination Central	Dialysis facilities coordinate many activities such as patient transport, transferring patient medical information and connecting patients to transplant centers. Effective coordination is critical, but patients can slip through the cracks.

Right from understanding key issues to advising you through the right set of insights and recommendations, Aranca Research, consolidation, and insightful analysis to aid in-depth understanding of therapy and effective decision-making

HOW CAN ARANCA HELP?

- 01

**Patient journey mapping:** pre- and post-diagnosis, field stories and burdensome part of disease from patient and caregiver perspective.
- 02

**Disease Progression Modelling:** Parameters used in disease progression, disease and symptom progression
- 03

**Patient Breakpoint Analysis:** Understanding key pain points in the patient journey from the patient and caregiver perspective
- 04

**Unmet needs mapping and Quality of life(QoL):** Disease progression, Symptoms impacting QoL, Daily activity impairment
- 05

**Economic Burden and Unmet Need Analysis:** Impact of a disease on the patient’s economic well-being and unmet needs analysis

Connect with us

[info@aranca.com](mailto:info@aranca.com)

[www.aranca.com/contact-us.php](http://www.aranca.com/contact-us.php)

[www.linkedin.com/company/aranca](http://www.linkedin.com/company/aranca)