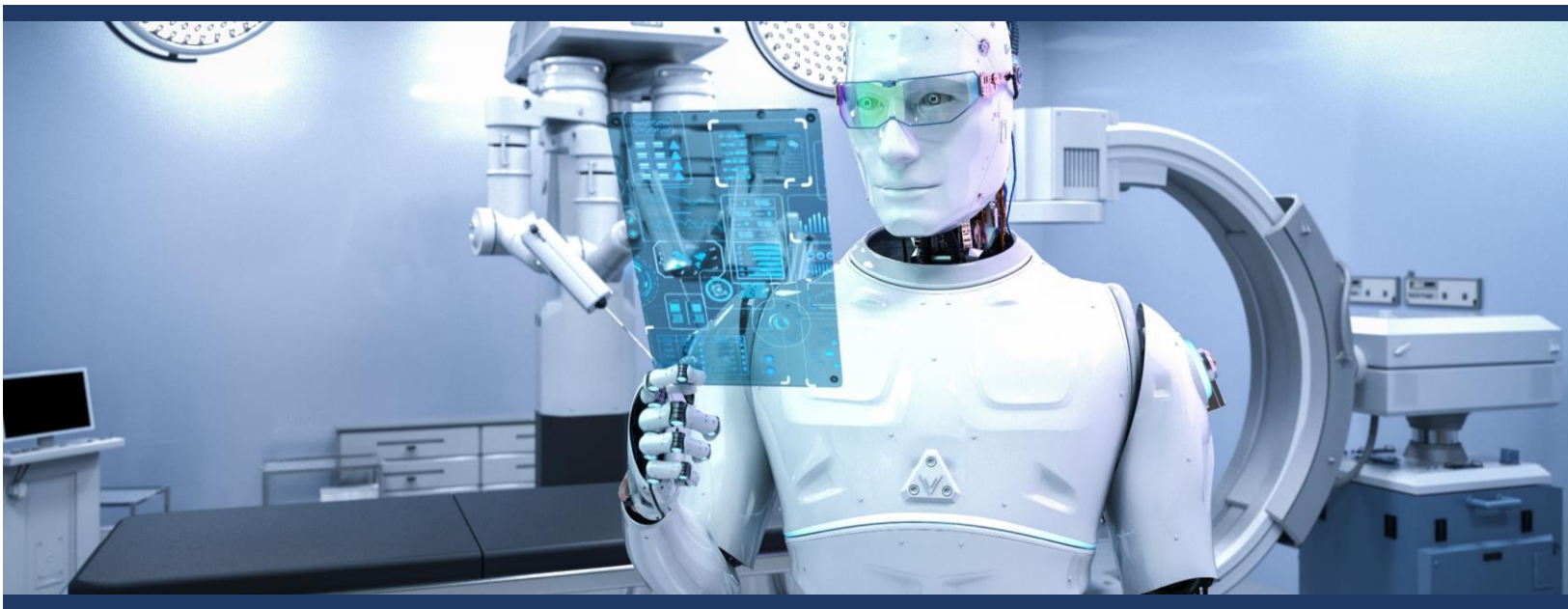


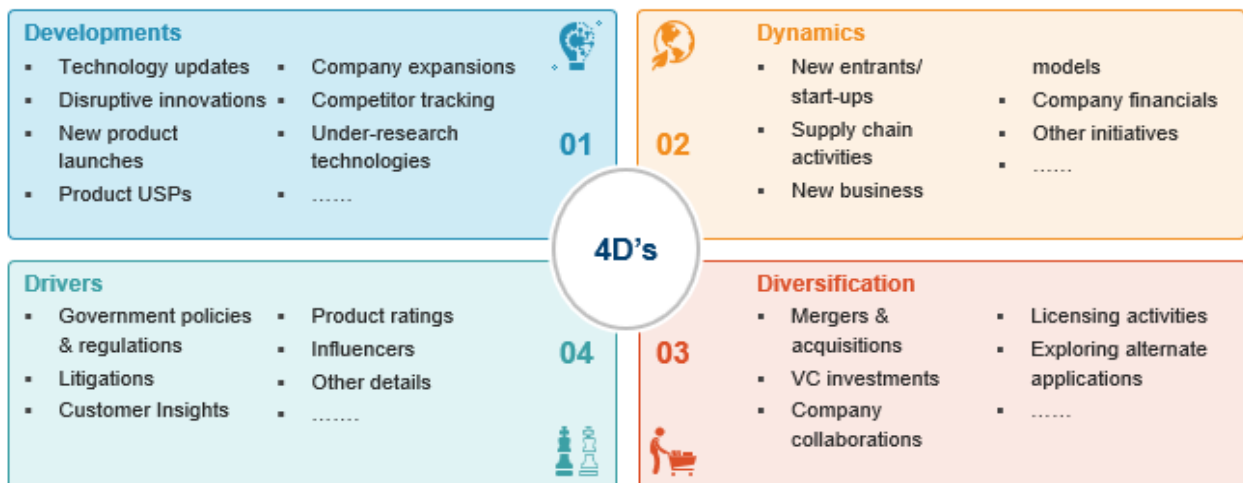
INTELLOTRACKER

AI IN ONCOLOGY FOR PATIENT CARE & MONITORING

JUNE 2023



ARANCA'S QUARTERLY SECTORIAL UPDATE ACROSS FOUR DIMENSIONS....





DEVELOPMENTS

New product launches	Veris Health	The Veris Cancer Care Platform, cancer care teams at the New Jersey Cancer Care, PA can now review patients' physiologic and clinical data in real time and deliver personalized care. <i>Source: HealthcareITNews</i>
New product launches	New Jersey Cancer Care, PA	New Jersey Cancer Care launches connected medical devices, a patient app and an integrated cloud-based clinician portal to achieve greater treatment compliance and drive oncology innovation. <i>Source: HealthCareIT News</i>
New product launches	Avenda Health	Avenda Health developed iQuest, an AI-based software designed to help identify where the cancer is in an individual's prostate by using a patient's clinical data to map the extent of the disease and simulate treatment options. <i>Source: CancerWellness Blog</i>
Under-research technologies	WILEY	AI-enabled electrochemical biosensors integrated with portable and wearable analyzing electronic platforms further simplify operations by using a urinary multimarker biosensor combined with two common ML algorithms for precise screening for prostate cancer (PCa). <i>Source: Wiley Online Library</i>
Under-research technologies	WILEY	AI-enabled remote patient monitoring (RPM) architectures revolutionize healthcare monitoring by detecting early deterioration, personalizing patient parameter monitoring, and learning human behavior patterns. <i>Source: Wiley Interdisciplinary Reviews</i>
Under-research technologies	IEEE youngprofessionals	AI can be integrated into wearable devices, such as smartwatches, to monitor changes in a person's vital signs and detect early signs of cancer. These issues can be tracked with mobile health technology such as physical activity monitors for effective remote care. <i>Source: IEEE YoungProfessionals</i>



DYNAMICS

New Entrants/Startups	enlitic	Enlitic employs artificial intelligence (AI) to improve patient care. The company's mission is to employ artificial intelligence to assist clinicians in making more accurate diagnoses and treatment suggestions. <i>Source: Analytics Insights</i>
New Entrants/Startups	HURONE AI	Hurone AI is a MedTech startup headquartered in Seattle, Washington which offers AI-powered applications to make high quality cancer care accessible to people all around the world. <i>Source: Company Website</i>
New Entrants/Startups	MVISION <small>Artificial Intelligence in Medical Imaging</small>	Finnish startup Mvision AI has a vision where cancer treatment is accessible in a matter of hours, not weeks. The healthtech team uses AI to supercharge treatment planning. <i>Source: EU Startups Blog</i>
Other Initiatives	UC San Diego Health	The future mission control center at UC San Diego Health will serve as a hyper-connected hub to monitor patient health and safety through integration of data streams from cameras, sensors, EHRs, bedside monitors, imaging, and wearables for patients with cancer. <i>Source: UC San Diego Health</i>



DIVERSIFICATION

Company collaboration	ZEPHYR AI KangarooHealth <small>Remote Patient Monitoring & Medical Research</small>	Zephyr AI and KangarooHealth Announce Partnership to Harness the Power of Remote Patient Monitoring and Artificial Intelligence <i>Source: BusinessWire</i>
Company collaboration	C2i Genomics AstraZeneca	C2i Genomics and AstraZeneca will work together on the integration and validation of the C2i Genomics platform at the AstraZeneca lab. with the goal of enhancing oncology treatments <i>Source: HITConsultant</i>
Company collaboration	Paige Microsoft	Paige collaborates with Microsoft to deliver a new generation of clinical applications and computational biomarkers to transform patient care and cancer diagnosis. <i>Source: BusinessWire</i>
Company collaboration	Imagia Canexia Health	Imagia and Canexia Health's AI-based informatics is used for treatment selection, patient monitoring, and provides clinical laboratories support to bring testing in-house. <i>Source: BCTech Blog</i>
VC Investments	ARTERA Johnson & Johnson <small>INNOVATION</small>	Artera launches with \$90 Million in funding to personalize cancer therapy with Multimodal AI. The investment comes from a syndicate of prominent tech and healthcare investors, including Coatue, Johnson & Johnson Innovation – JJDC, Inc. among others. <i>Source: BusinessWire</i>
VC Investments	UF UNIVERSITY of FLORIDA	The University of Florida has been awarded \$3.6 million of a \$23.5 million multicenter grant for a four-year data-generation project for artificial intelligence in critical care and advancing artificial intelligence in ways that improve patients' ability to recover from life-threatening illnesses such as cancer. <i>Source: UF Blog</i>

DRIVERS		
Government regulations		<p>Drafted by HL7, this is a relatively new standard built exclusively to handle the advances made in information technology and data transfer in the healthcare industry for remote patient monitoring.</p> <p>Source: HelathSnap</p>
Influencers		<p>Faranak Sobhani - Research Scientist, Inify Laboratories, has contributed to the company's extensive research and development of precise algorithms for prostate cancer detection.</p> <p>Source: RE.WORK Blog</p>

SOLUTION PORTFOLIO – TECHNOLOGY RESEARCH & ADVISORY



 GROWTH ADVISORY	 INVESTMENT RESEARCH & ANALYTICS	 VALUATION & FINANCIAL ADVISORY	 TECHNOLOGY RESEARCH & ADVISORY	 PROCUREMENT & SUPPLY CHAIN INTELLIGENCE
---------------------	-------------------------------------	------------------------------------	------------------------------------	---

This material is exclusive property of Aranca. No part of this presentation may be used, shared, modified and/or disseminated without permission. All rights reserved.